



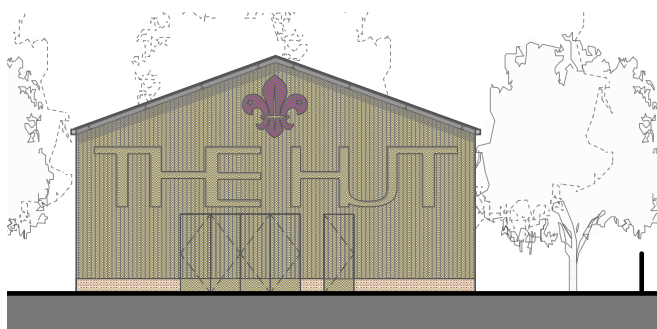
Winchester Scouts: Adventurous Activity Appeal



<http://winscouts.org.uk/dgl-pinsent-dev-appeal.html>

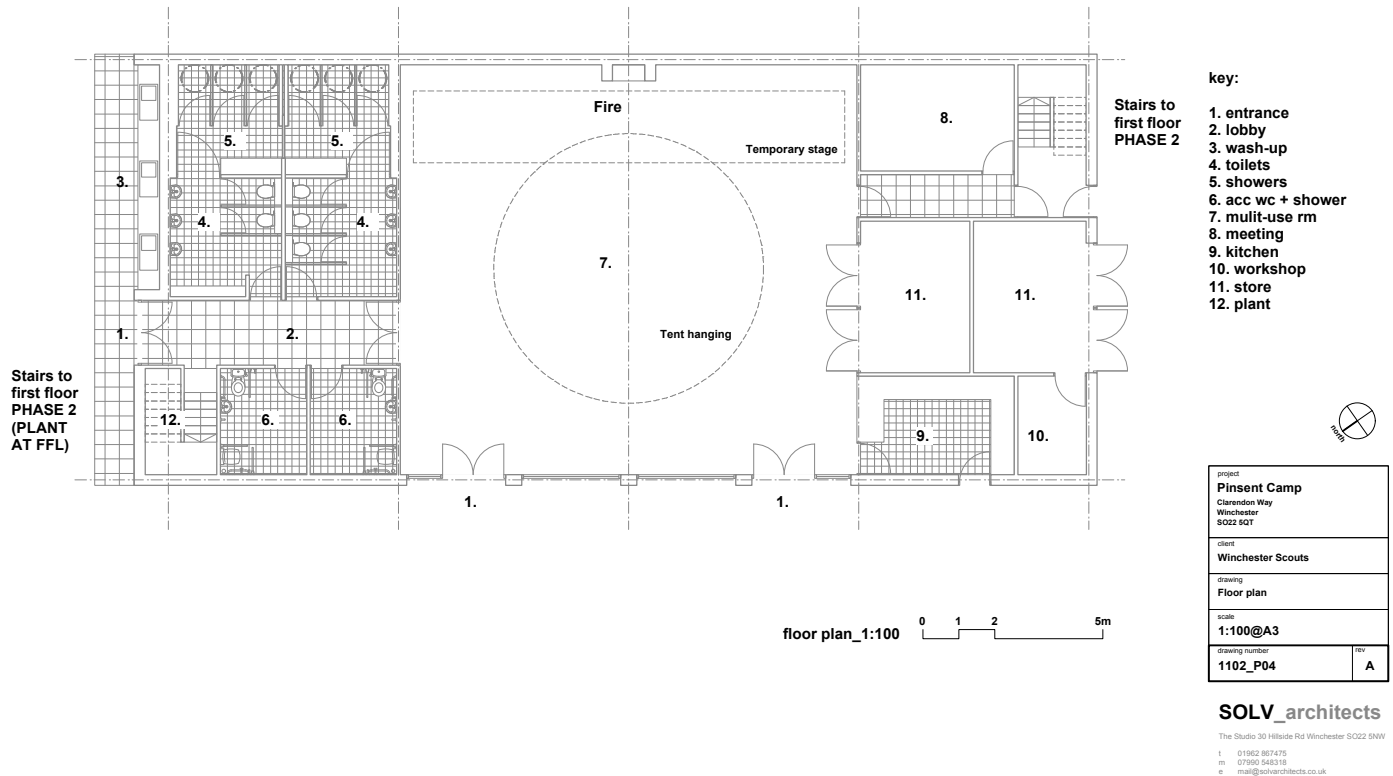
1. THE £450k DEVELOPMENT APPEAL FOR PINSENT CAMPSITE, CLARENDON WAY, WINCHESTER ... HOW YOU CAN HELP ...

- (a) Camping in the wild outdoors at Pinsent Campsite has been an essential part of Winchester Scouting for over 80 years. Countless youngsters have grown up with this great experience. Many Winchester people hold fond memories of waking up under canvas at Pinsent to the sound of woodpeckers and nightingales in the early morning mist, and cooking their own breakfast over open fires. To this day, we make no charge for Winchester Scout Groups and their 900 Scouts camping at Pinsent.
- (b) A vital part of managing this outstanding experience is having a number of out-buildings on the edge of Pinsent to provide all the essential facilities. These buildings are long overdue replacement. Planning Officers suggested that they be replaced by a single building. Detailed planning permission was achieved in 2012 for a new building with facilities more suited to the needs of the 21st Century.
- (c) The total estimated project cost is £450k. We already have £50k from limited reserves. We are appealing to 8,000 people who have camped at Pinsent in the last 80 years to each gift us £50. Over 1,000 of these are from Winchester District today - our 900 Scouts' parents and all our leaders and supporters. Other milestones are to match our first £50k with a similar grant or donation; and to match that again with up to 3 further £100k grants or donations to hit successive milestones to start a build by phases in the Autumn. Please help. Every £50 will make a difference and help spread the word.



south west elevation





2. THE ISSUES AND THE OPPORTUNITY

- (a) The existing campsite buildings are no longer fit for purpose. They are long overdue replacement. The existing toilet and shower block is particularly bad.
- (b) The poor facilities and sub-standard existing buildings deter some external users of the campsite with consequential loss of income to help maintain the campsite.
- (c) Winchester Scouts aim to fully comply with the letter and spirit of Scout Association rules for camping Beavers and Cubs that require alternative accommodation in event of adverse conditions.
- (d) The capital cost of a new building is beyond the immediate financial resources of Winchester District Scouts. Fund-raising is necessary.

3. THE PROJECT

- (a) The agreement is to replace the existing structures and temporary accommodation to significantly improve the delivery and support of adventurous activities at Pinsent campsite. This will be achieved whilst preserving the site's intrinsic wild qualities and character; whilst respecting the local environment by minimising the visual impact of the development on the surroundings; and by using sustainable materials.
- (b) In detail, the four existing structures will be demolished - the storage container, a portakabin, the toilet block and a metal shed. These will be replaced by a new single building, that contains the facilities provided by the four existing buildings in a size and standard more appropriate to the use of the campsite for the 21st Century. The Trustees' require the building to serve the needs of Winchester Scouts for at least the next 80 years.

Site layout and detailed plans as passed by WCC Planning

Rev	Description	Date
1	Planning Area	2/6/2012

Notes:
 Do not scale from this drawing for other than planning purposes.
 Details of dimensions are given in the planning application.
 The copyright of this drawing is retained by SOLV architects.
 The drawing may not be copied without written permission.

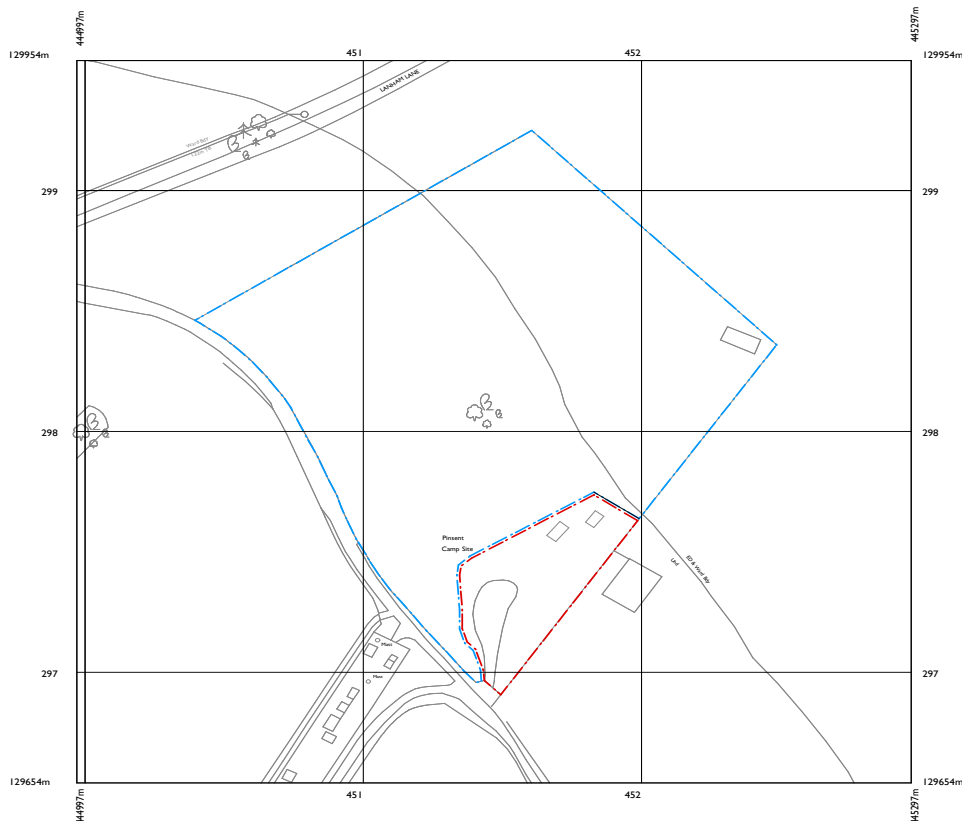


project	Pinsent Camp Clarendon Way Winchester SO12 5QT
client	Winchester Scouts
drawing	Site plan
scale	1:500@A3
drawing number	1102_P02
rev	-

SOLV architects
 The Studio 30 Hillside Rd Winchester SO12 5NW
 t: 01792 867475
 m: 07790 546318
 e: mail@solvarchitects.co.uk

Rev	Description	Date
1	Planning Area	2/6/2012

Notes:
 Do not scale from this drawing for other than planning purposes.
 Details of dimensions are given in the planning application.
 The copyright of this drawing is retained by SOLV architects.
 The drawing may not be copied without written permission.



© Crown Copyright 2012
 Reproduction in whole or in part is prohibited
 without the prior permission of Ordnance Survey.
 Licence number_Gormans_OI379397



project	Pinsent Camp Clarendon Way Winchester SO12 5QT
client	Winchester Scouts
drawing	OS plan
scale	1:1250@A3
drawing number	1102_SV.01
rev	-

SOLV architects
 The Studio 30 Hillside Rd Winchester SO12 5NW
 t: 01792 867475
 m: 07790 546318
 e: mail@solvarchitects.co.uk

4. TIMESCALES

- (a) A phased build, timed to the completion of successive funding milestones.
- (b) Grants and donations of £100,000 (when added to the Scouts' existing £50,000 seed fund) will allow the Trustees to make the initial investment to commission the full plan design, to undertake ground works with foundations and floor, and to erect and complete the full steel framework and roof.
- (c) The current toilet building and shower block is aging fast and needs replacing as a priority. The next £125,000 will fund the build and fit-out of these first two bays. This includes the machinery for the completed building that sits in these two bays.
- (d) A further £40,000 of grants and donations will complete the building structure with all walls and external works.
- (e) A final £135,000 of grants and donations will be needed to fit-out the interior of the building to a high standard - both internally and externally.

5. SUMMARY

- (a) A new building is needed at Pinsent Campsite to serve the needs of Winchester's Scouts and other young people for at least the next 80 years.
- (b) The new building will immediately benefit the 862 youngsters in Winchester Scouts (growing at some 10% per annum), and other young people who use the site that currently account for some 25% of usage - local Schools, Scouts from outside the District, Brownies and Guides, and Duke of Edinburgh Awards Scheme groups.
- (c) Some 650 young people a week currently benefit from Pinsent campsite. At this level of usage it is running at some 50-75% of the maximum capacity of 150 campers on the site at any one time. Current facilities are so poor that some are deterred from using the site. A new building will correct this. Pinsent will then be able to serve larger numbers of young people.
- (d) The project is advanced with both detailed planning permission and the first £50k of funding in place. It now needs £400k of additional funding.
- (e) Winchester Scouting is self-funding on an operating basis. As a 100% voluntary organisation it is dependent on giving for capital expenditure projects.
- (f) Winchester Scouts achieve at least a x11 multiplier through their adults volunteering their time. For every £1 spent there is a x11 uplift. Scouts' adult volunteering provides activities that have at least a £1.7m annual replacement cost.

6. KEY PROJECT STAFF

- (a) The Project Manager for the build is Colin Brooks FCIOB, CSSW. As a matter of good governance, The Project Manager will be accountable to a Pinsent Development sub-committee of the District Executive comprising at least 3 members including members of the District Executive Committee and the Pinsent Management sub-committee, these members to include the District Chairman and the District Commissioner.



Open Letter to Parents, Leaders and Supporters



May 2014

Dear Parent, Leader or Supporter,

We need your financial and practical support to spread the word. This is one of the most important initiatives since the gifting of Pinsent Campsite in 1933.

It is time to replace our Pinsent buildings for the 21st Century. This is important for all our Scout Groups today - and for future generations, just as others gave us Pinsent. After the preparatory work of the past 2 years we now need to pull the trigger and make it all happen. Today, there are 2 ways in which you can make a difference. Please help us raise the additional £400k we need:

- Make just a £50 on-line gift through the JustGiving icon on the District website at <http://winscouts.org.uk/dgl-pinsent-dev-appeal.html>. Your contribution can be boosted by Gift Aid. With £50k already at bank, 1,000+ parents & leaders etc. each donating £50 would take us to £100k.
- You may know older people with fond memories of camping at Pinsent as Scouts. Please point them to our JustGiving site or to me or Richard.

As your District Commissioner and District Chairman, we believe that we could not be writing to you at a better time.

Scouting in Winchester has never been healthier. All of you are combining in a fantastic way to make more places and better Scouting available to many more youngsters. You may not fully appreciate how strong and vibrant our Scouting is - all because of your contributions as a volunteer or a parent-helper.

This past year Winchester produced the strongest growth of all the 27 Scout Districts in Hampshire. Our total membership grew 14%. This included increasing the number of Beaver places for 6 year olds by 40%. The number of Beaver leaders grew by an even more amazing 100%. This is the result of our effort to have 6 leaders and section assistants in every Beaver Colony.

It's not just quantity. Feel the quality! Four of our leaders and 16 of our Scouts and Explorers have been selected in open competition to go to the 2015 World Jamboree in Japan. That is some 20% of the Hampshire County contingent.

When we combine, we get great results for Winchester Scouts. To make this project happen we need to reach 8,000 people who have camped at Pinsent over the past 80 years who might each donate £50 or more. Please help and give now.

Yours sincerely

Stephen Parker District Commissioner

dc.winchester@scouts-hants.org.uk

Richard Mendelsohn District Chairman

richardmendelsohn@btinternet.com

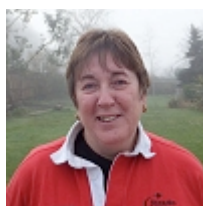
WINCHESTER DISTRICT SCOUTS' EXECUTIVE AND TRUSTEES' DETAILS



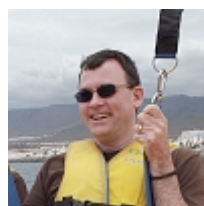
District Chairman
Richard Mendelsohn



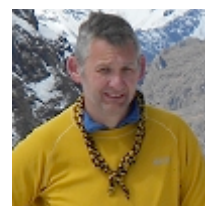
District Commissioner
Stephen Parker



District Secretary
Viv Brooks



District Treasurer
Garry Cook



District Scout Network Leader
Rob James



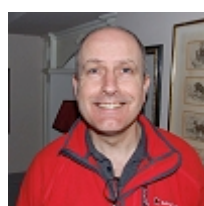
District Explorer Commissioner
(DESC)
Colin Brooks



Chairman
1st Winchester
Dave Kesby



Chairman
3rd Winchester
Andrew Rolt



Chairman
5th Winchester
Andy Jennings



Chairman
8th Winchester
Paul Haydon



Chairman
9th Winchester
Derek Conway



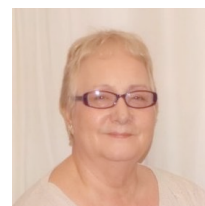
Chairman
11th Winchester
Sam Gavins



Chairman
12th Winchester
Richard Eve



Chairman
14th Winchester
Simon Maunder



Chairman Appointments Advisory
Committee
Dawn Inglis



Chairman Pinsent Management
Committee
Ian Johnson



Co-Chairman St George's Day
Committee
Richard Tate



Co-Chairman St George's Day
Committee
Andy Jennings



Chairman
District Explorer Scouts
Committee
Sarah Gooding

Source: http://www.winscouts.org.uk/team-district_executives.html where you can find biographical details of the Winchester District Executive, the members of which are Charity Trustees of Winchester District Scout Council, Registered Charity No: 302317